



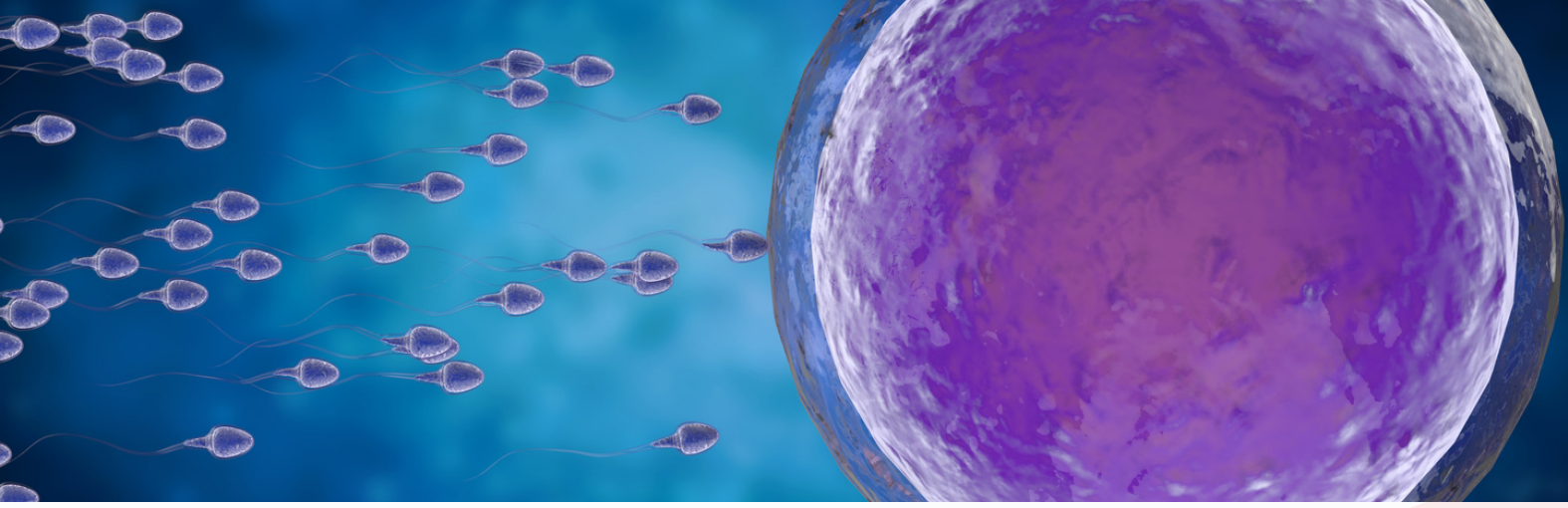
2022 KDHS

BREAKDOWN

"Data should be like a crystal-clear stream, where the valuable insights flow effortlessly, unobstructed by complexity."



@KenyaSRHR



Fertility

- Total Fertility Rate (TFR) The TFR for Kenyan women is **3.4 children per woman** if current age-specific fertility rates continue. It represents the average number of children a woman would have during her reproductive years.
- Fertility rates vary by age group. They are lowest among adolescents (15-19 years old) at 73 births per 1,000 women, **peak at 179 births per 1,000 for women aged 20-24**, and decrease with age thereafter.
- Women in **rural areas have a higher total fertility rate of 3.9**, while those in urban areas have a lower TFR of 2.8
- The percentage of women aged 15-19 who have ever been pregnant increases with age, from 3% at age 15 to 31% at age 19.
- Women with **no education are more likely** to have ever been pregnant (40%) compared to those with more than secondary education (5%).
- **Teenage pregnancy is more prevalent** in the lowest wealth quintile (21%) compared to the highest wealth quintile (8%).
- The percentage of women age 15-19 who have ever been pregnant are highest in **Samburu (50%), West Pokot (36%), Marsabit (29%), Narok (28%), Meru (24%), Homa Bay (23%), Migori (23%), Kajiado (22%), Siaya (21%), and Baringo (20%) and lowest in Nyeri and Nyandarua (5% each)**

Teenage Pregnancy



- 15% of **women aged 15-19** have been pregnant at some point.
- This includes 12% with live births, 1% with pregnancy losses, and 3% currently pregnant.
- **In Nairobi**, 8.0% of women aged 15-19 have ever had a live birth.
- 0.4% of women aged 15-19 are currently pregnant.
- In total, 8.4% of women aged 15-19 in Nairobi City have ever been pregnant

CONTRACEPTIVES

Uptake

- **63% of currently married women** are using a contraceptive method. Among these, 57% are using modern contraceptive methods.
- Among currently married women, the **most frequently** used contraceptive methods are injectables (20%), implants (19%), and contraceptive pills (8%).
- **70% of sexually active unmarried** women aged 15-49 use a contraceptive method. Among these, 59% use modern contraceptive methods.
- Among sexually active unmarried women, male condoms are the **most commonly** used contraceptive method (20%), followed by injectables (16%) and implants (11%).



Traditional Vs Modern Methods

- Traditional contraceptive methods are more common among sexually active unmarried women (11%) than currently married women (6%)

Regional Variation

- The percentage of currently married women using a modern method **is lowest in** Mandera (2%), followed by Wajir (3%), Marsabit (6%), and Garissa (11%) with Embu (82%) recording the highest

CONTRACEPTIVES

The Unmet Demand

- **76% of currently married** women express a demand for family planning.
- Among **sexually active unmarried women, 89%** have a demand for family planning.

Unmet Need for Family Planning

- 14% of currently married women
- 19% of sexually active unmarried women

Impact of Meeting Demand

- If all women who want to space or limit their children were to use family planning methods, the contraceptive prevalence rate **would increase** significantly, reaching 76% among currently married women and 89% among sexually active unmarried women.

Trends

- **Over the years**, the total demand for family planning **has increased**, while unmet need has declined. In 2022, unmet need stands at 14%.

Education and Wealth Impact

- Women with higher education levels and greater wealth tend to have lower unmet needs for family planning. For example, among currently married women, unmet need declines from **23% for those with no education** to 10% for those with more than secondary education.

Regional Variation

- Some counties have higher unmet needs for family planning, such as **Marsabit (38%), Tana River (34%), West Pokot (30%), Samburu (29%), Siaya (27%), and Isiolo (27%)**. This suggests the importance of addressing regional disparities in family planning services.
- **Nairobi** has a higher unmet need for modern contraceptives at 57.5 which is higher than the national average of 56.8%



ANTENATAL CARE



- Nearly **all women (98%)** reported receiving antenatal care from a skilled provider for their most recent live birth or stillbirth in the 2-year period before the survey.
- Overall, **66% of women had four or more** ANC visits for their most recent live birth or stillbirth.
- 90 % women had access to iron supplements.

HIV PREVENTION



- Approximately half of young people in Kenya (**54% of women and 55% of men**) aged 15–24 possess knowledge about HIV prevention.
- Knowledge of HIV prevention is lower among respondents aged 15–17, with 44% of both women and men in this age group having knowledge about prevention.
- **Young people** who have never had sexual experiences also exhibit lower knowledge levels about HIV prevention, with 47% of women and 48% of men in this category having knowledge about prevention.
- **Urban residents are generally more informed** about HIV prevention than their rural counterparts. Specifically, 57% of young women and 63% of young men in urban areas have knowledge about prevention, compared to 52% of young women and 51% of young men in rural areas.
- A greater percentage of women (85%) than men (73%) have ever been tested for HIV
- There is a **strong correlation between education level and knowledge of HIV** prevention. Knowledge increases significantly with higher education levels, with only 13% of young women with no education having knowledge, compared to 69% of those with more than a secondary education. Similarly, for young men, knowledge ranges from 14% among those with no education to 80% among those with more than a secondary education.

Advocacy note

These findings underscore the importance of comprehensive HIV education and prevention programs, particularly for young people. Access to accurate information and awareness about HIV prevention methods is crucial in reducing the risk of infection, and it is evident that education plays a significant role in improving knowledge levels.

SEXUAL BEHAVIOUR

There was no age disaggregation from the 2022 report

Sexual Partners

- 15% of men reported having **two or more sexual partners** in the 12 months before the survey, whereas only 4% of women reported the same.
- Among those with multiple partners in the last 12 months, 24% of women and 45% of men reported using a condom during their last sexual intercourse.
- The average number of sexual partners is 2.3 among women and significantly higher at 7.4 among men.

Sexual Activity Outside of Marriage or Cohabitation

- In the 12 months before the survey, 19% of women had sexual intercourse with a person who was neither their husband nor lived with them.
- **Only 37% of these women reported using a condom** during their last sexual intercourse with such a partner.
- For men, 35% reported having sex with a person who was neither their wife nor lived with them.
- **Of these men, 68% reported using a condom** during their last sexual intercourse with such a partner.
- **Condom usage decreases from** 46% among women aged 15-19 to 29% among women aged 30-49.

SEXUAL VIOLENCE

Prevalence of Sexual Violence

- Among women aged 15–49, **13% reported** experiencing sexual violence at some point in their lives, and 7% reported experiencing sexual violence in the 12 months before the survey.
- For men in the same age group, **7% reported** ever experiencing sexual violence, and 4% reported experiencing sexual violence in the 12 months preceding the survey.
- The percentage of women who have experienced sexual violence **increases with age**, from 7% among those aged 15–19 to 18% among those aged 40–49.

Marital and Partner Status

- Among women, 3% of those who have never been married and never had an intimate partner reported sexual violence, compared to 12% of never-married women who had an intimate partner, **13% of currently married women, and 27% of formerly married women. Intimate partner Violence**

Geographical Variation

- The percentages of women who have experienced sexual violence vary by county, with the highest reported rates in counties such as **Bungoma (30%), Murang'a (24%), Homa Bay (23%), and Embu (22%). GBV hotspots**

Perpetrators of Sexual Violence

- The most commonly reported perpetrators of sexual violence among women who have ever been married or had an intimate partner were current husbands or intimate partners (**71%**) and former husbands or intimate partners (**19%**).
- Among men with the same relationship status, the most commonly reported perpetrators were current wives or intimate partners (**63%**) and former wives or intimate partners (**32%**).

Physical Violence

Prevalence of Physical Violence

- Among **women in Kenya, 34% reported** experiencing physical violence since the age of 15. Within this group, 16% of women experienced physical violence often or sometimes in the 12 months before the survey.
- Experience of physical violence among women **increases with age**, with 20% of women aged 15–19 reporting such experiences, compared to 42% of women aged 45–49.
- **Marital status is linked to experiences of violence** among women, with those who have ever been married being much more likely to have experienced violence since age 15 (41%) compared to those who have never been married (20%).
- For men, **27% reported experiencing physical violence since the age of 15**, with 10% experiencing such violence in the 12 months before the survey.
- The percentage of women who have experienced physical violence since age 15 varies **by county**, with the highest reported rate in Bungoma (62%) Murang'a (24%), HomaBay (23%), and Embu (22%) and the lowest in Mandera (9%).
- The most commonly reported perpetrator of physical violence among women who have ever been married or ever had an intimate partner was their current husband or intimate partner (54%), followed by a former husband/intimate partner (34%).
- The most common perpetrators of physical violence among men who have ever been married or ever had an intimate partner were **teachers (28%)**, followed by current wives/intimate partners (20%) and former wives/intimate partners (19%).
- Twenty-three percent of men who have ever been married or had an intimate partner experienced physical violence **at the hands of other persons**.
- **Teachers (33%) and mothers/stepmothers (25%)** were the most common perpetrators of physical violence against women who have never been married or never had an intimate partner.
- **Teachers (46%) and schoolmates/classmates (22%)** were the most common perpetrators of physical violence against men who have never been married or had an intimate partner.

Female Genital Mutilation/Cutting

- **Prevalence is at 15%** from 38% in 2003 KDHS
- **Age 15 to 19 have a higher prevalence** compared to older women



Gaps in the KDHS 2022 report.

- **Limited Insight into HIV/AIDS Prevalence:** The available data primarily focuses on HIV/AIDS prevention knowledge, leaving a gap in understanding the actual prevalence rates and the geographical distribution
- **Incomplete Geographic Distribution for FGM:** The data lacks comprehensive information regarding the geographic distribution of Female Genital Mutilation (FGM) cases, making it difficult to target interventions effectively.
- **Age Segregation Limitations:** The age-based categorization falls short in providing specific data on child and teen demographics, resulting in a lack of information regarding child pregnancy and child abuse cases, which are distinct from teenage pregnancy and Sexual and Gender-Based Violence (SGBV) cases."

Srhr Alliance



KENYA

Sexual Reproductive
Health and Rights Alliance

